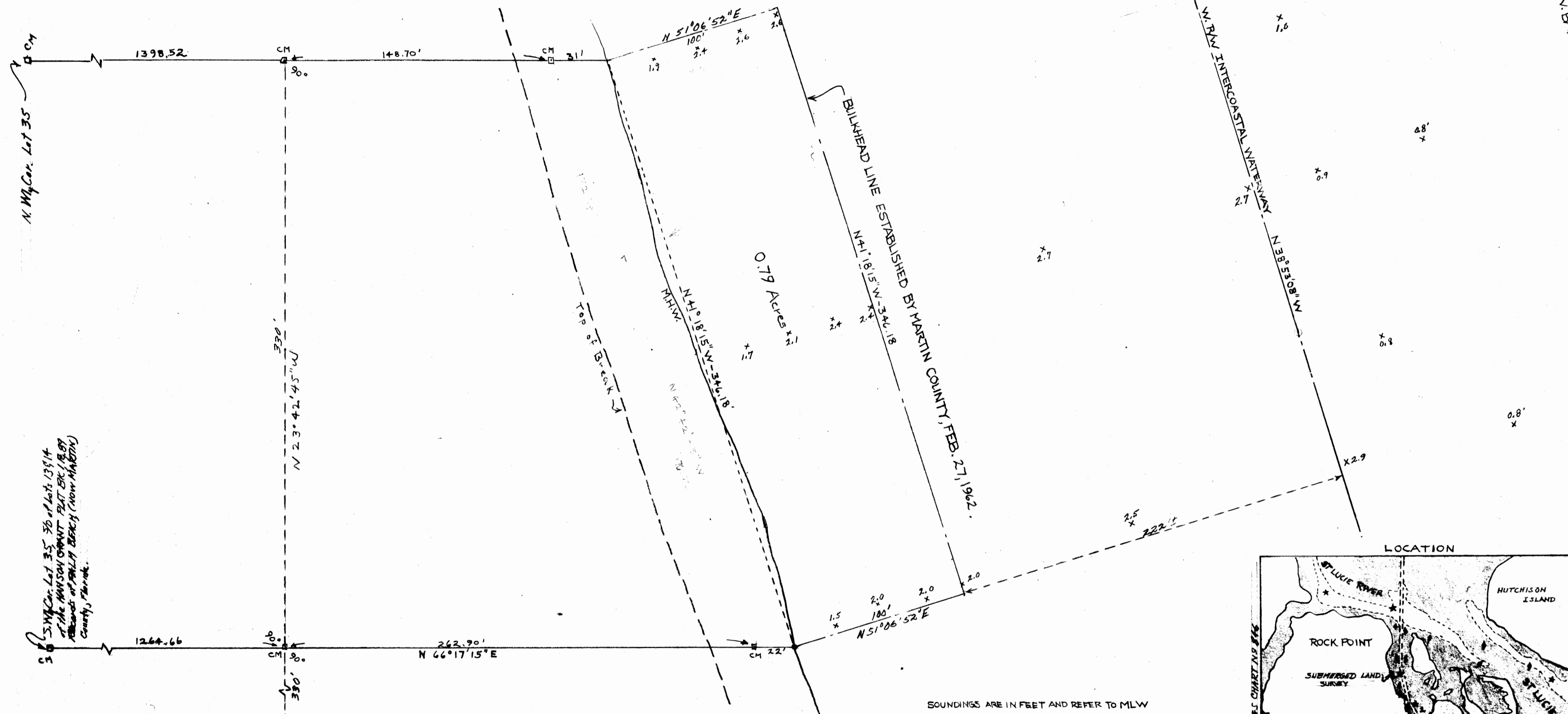


# SUBMERGED LAND SURVEY

**SUBMERGED LAND DESCRIPTION:**  
 Start at the Southwesterly Corner of Lot 35, Plat of subdivision of Lots 13 & 14 of the HANSON GRANT Plat Bk. 1, Pg. 89, Public Records of Palm Beach (now Martin) County, Florida; thence run N 66° 17' 15" E a distance of 1527.56 to the Westerly Shoreline of Great Pocket for the point of beginning; thence meander said westerly shoreline of Great Pocket, N 41° 18' 15" W a distance of 346.18 feet; thence run N 51° 06' 52" E a distance of 100 feet; thence run S 41° 18' 15" E a distance of 346.18 feet; thence run S 51° 06' 52" W a distance of 100 feet to the point of beginning;



S.W. Corner of Lot 35, S.E. 3/4 of Lots 13 & 14 of the HANSON GRANT PLAT BK. 1, PG. 89, PUBLIC RECORDS OF PALM BEACH (NOW MARTIN) COUNTY, FLORIDA.

INTERSECTION W. R.W. OF BAYAVE AND THE NORTH LINE OF ROCKY POINT ESTATES PLAT BK. 3 PG. 61 PUBLIC RECORDS OF MARTIN CO., FLORIDA.

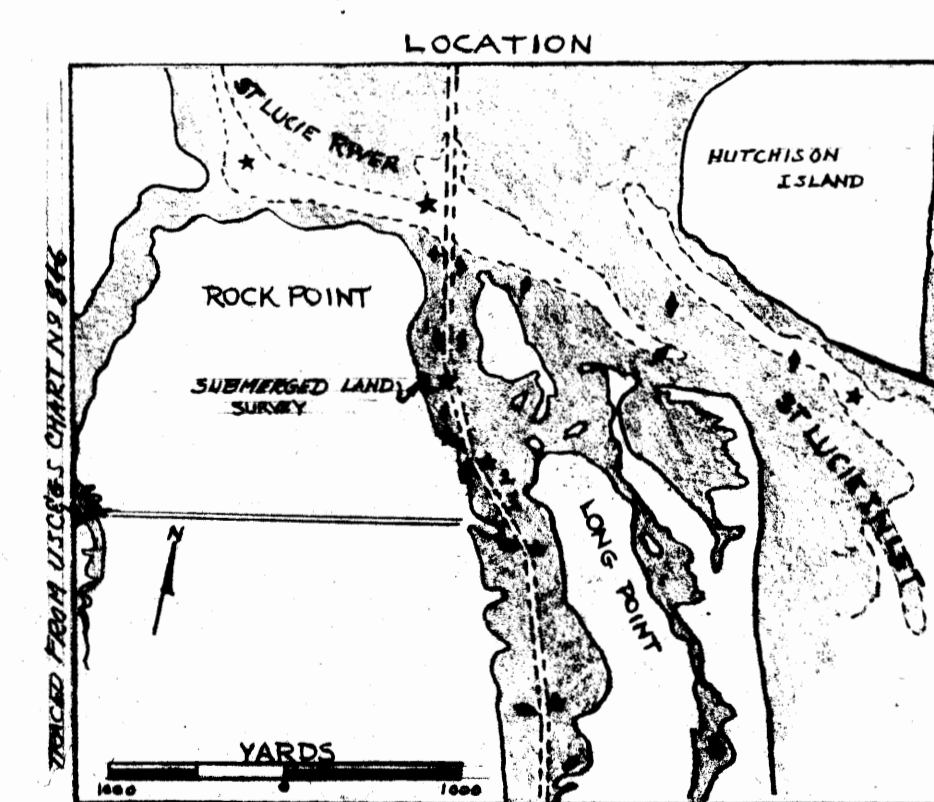
**UPLAND DESCRIPTION:**  
 Lot 35, Plat of Subdivision of Lots 13 & 14 of the Hanson Grant, Plat Bk. 1, Pg. 89, Public Records of Palm Beach (now Martin) County, Florida.

LOT 35, PLAT OF SUBDIVISION, OF LOTS 13 & 14, HANSON GRANT, PLAT BOOK 1, PAGE 89, PUBLIC RECORDS OF PALM BEACH (NOW MARTIN COUNTY), FLORIDA

MARTIN COUNTY PLAT BOOK 4,  
 PAGE 25

I HEREBY CERTIFY that the plat shown hereon is a true and correct representation of a survey, made under my direction, and that said survey is accurate to the best of my knowledge and belief.

*James E. Brock*  
 Registered Land Surveyor  
 Florida Certificate No. 688



<b>STAFFORD &amp; BROCK</b> ENGINEERING-SURVEYING STUART, FLORIDA	
Roger Skillman	
Date:	1/16/62
Scale:	1"=40'
File No.:	26-8